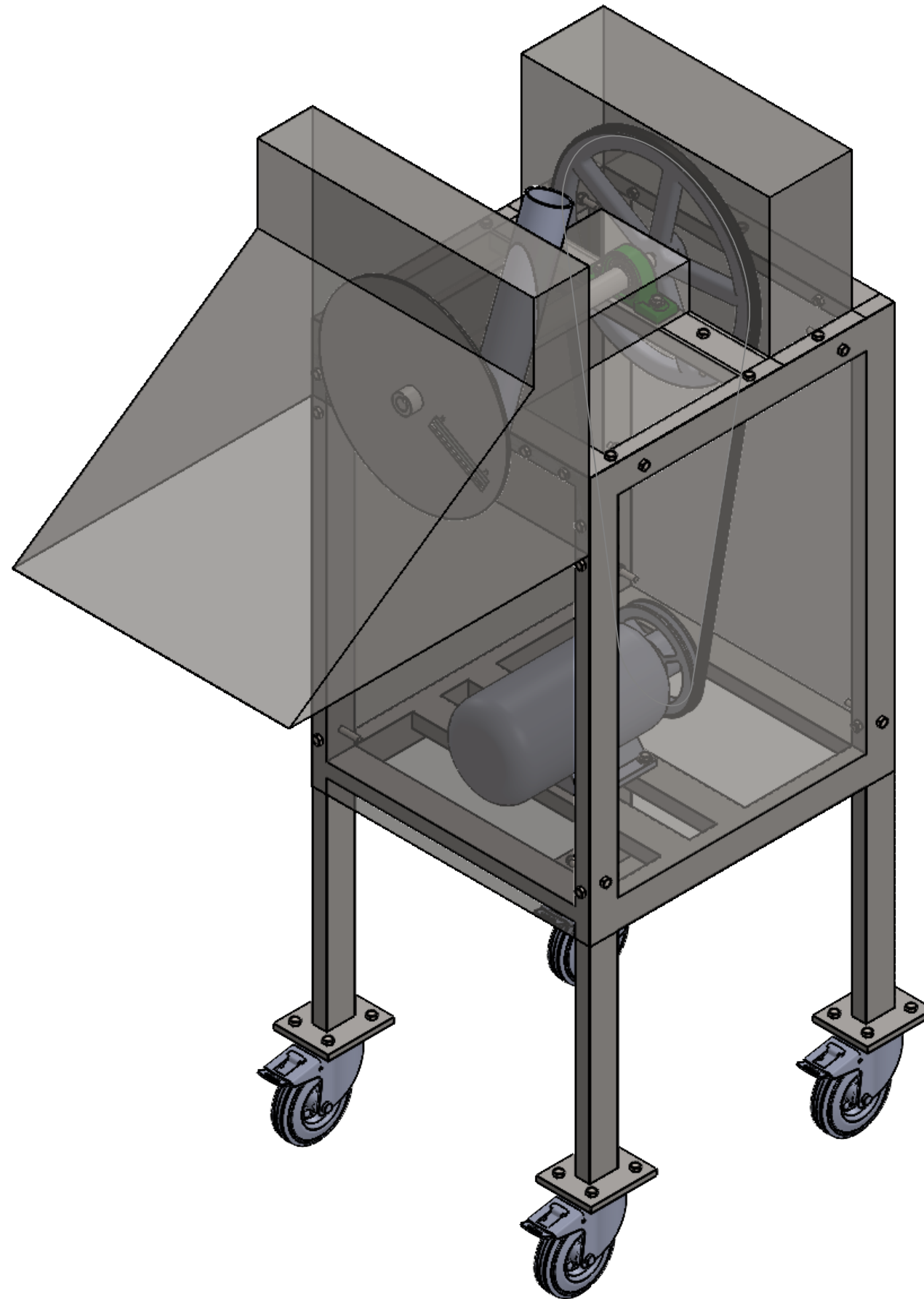



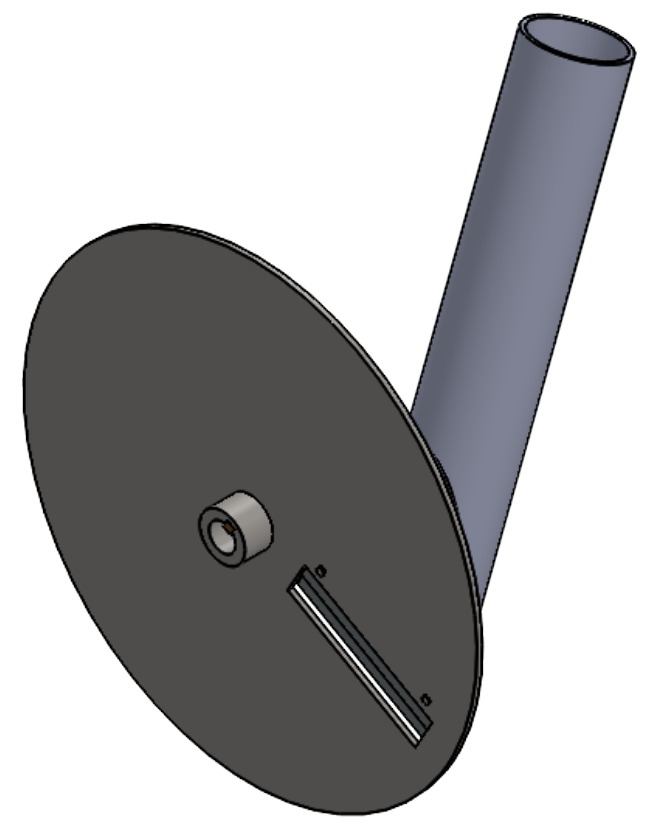
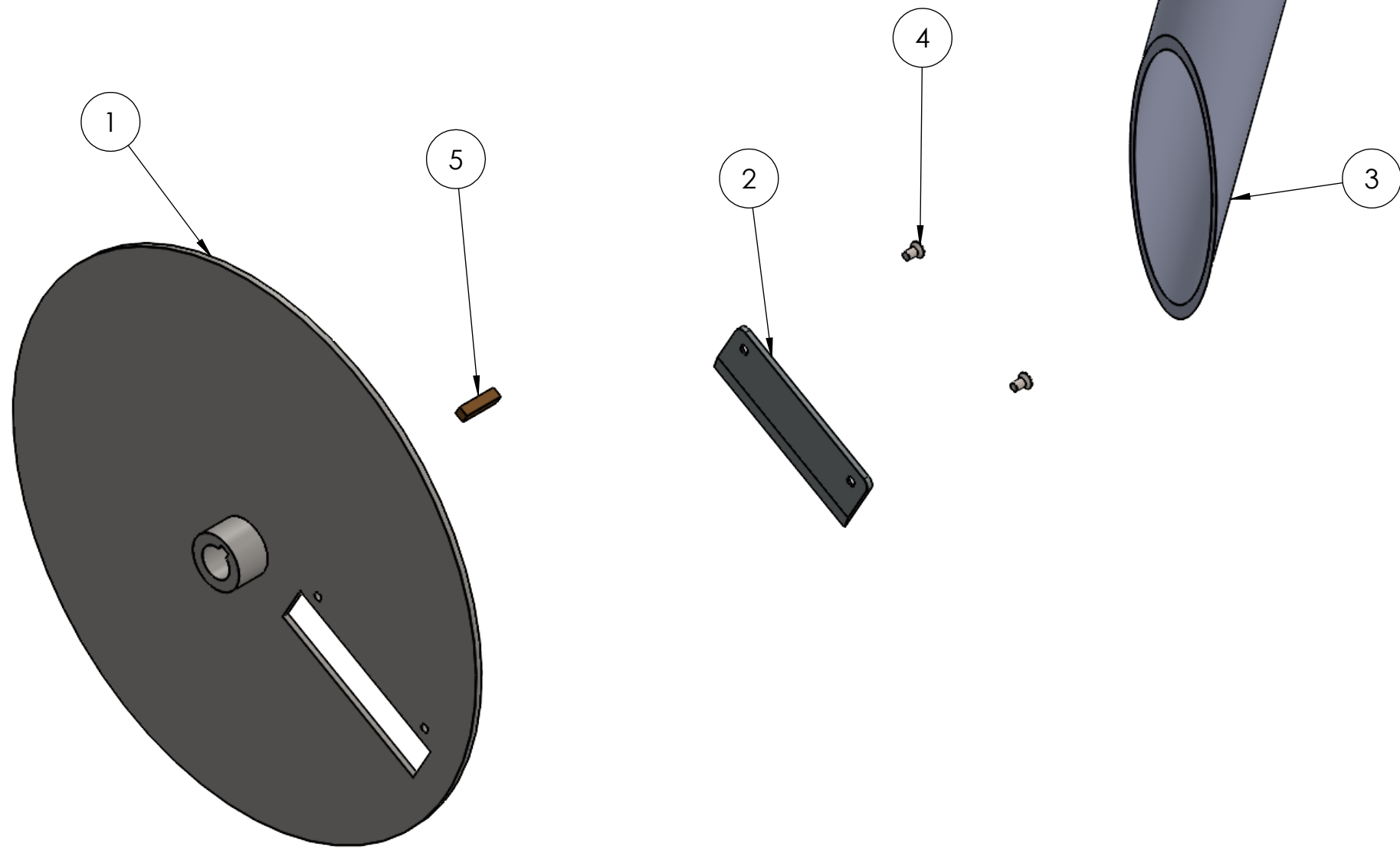


Apéndice L. Plano Rebanadora de plátanos



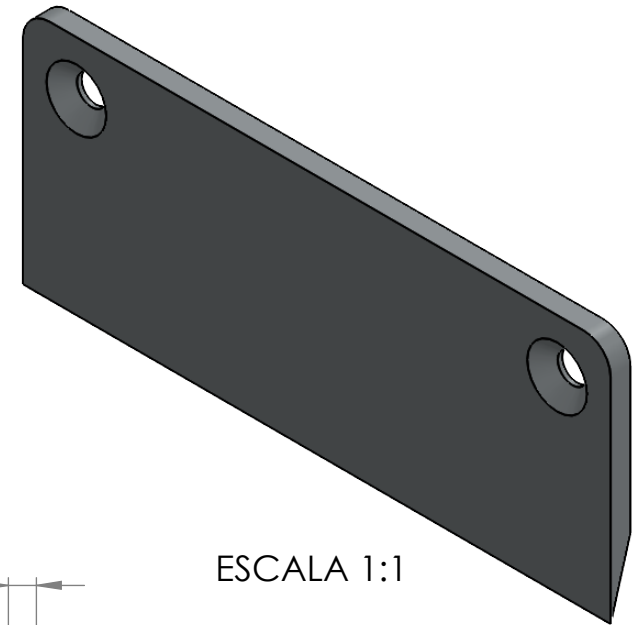
| | | | |
|---|--|--------------------------------|-----------|
| <div>Universidad Industrial de Santander</div> <div></div> | | ESCUELA DE INGENIERIA MECANICA | |
| Escala: 1:7 | | REBANDORA DE PLATANOS | |
| <div></div> <div>FORMATO A3</div> | DIBUJADO POR: Juan P. Carreño Nicolas Mantilla | 5/10/2025 | PIEZA N° |
| | | | HOJA 1/17 |
| MEDIDAS EN: | | MATERIAL: | |
| | | PL N° 01-00-00 | |



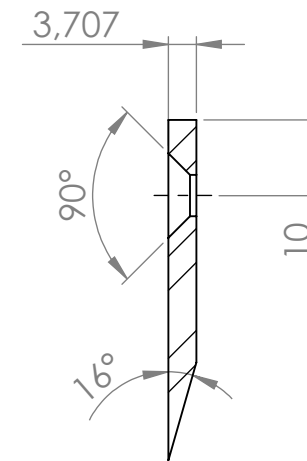
ESCALA 1:4

| | | | |
|----|------------------------|------|---------------------|
| 5 | CUÑA CUADRADA 6 mm | 1 | BRONCE |
| 4 | TORNILLO AVELLANADO M5 | 2 | AISI 304 |
| 3 | DUCTO DE ALIMENTACION | 1 | AISI 304 |
| 2 | CUCHILLA | 1 | ACERO INOX AL CROMO |
| 1 | DISCO | 1 | AISI 304 |
| Nº | NOMBRE | CANT | MATERIAL |

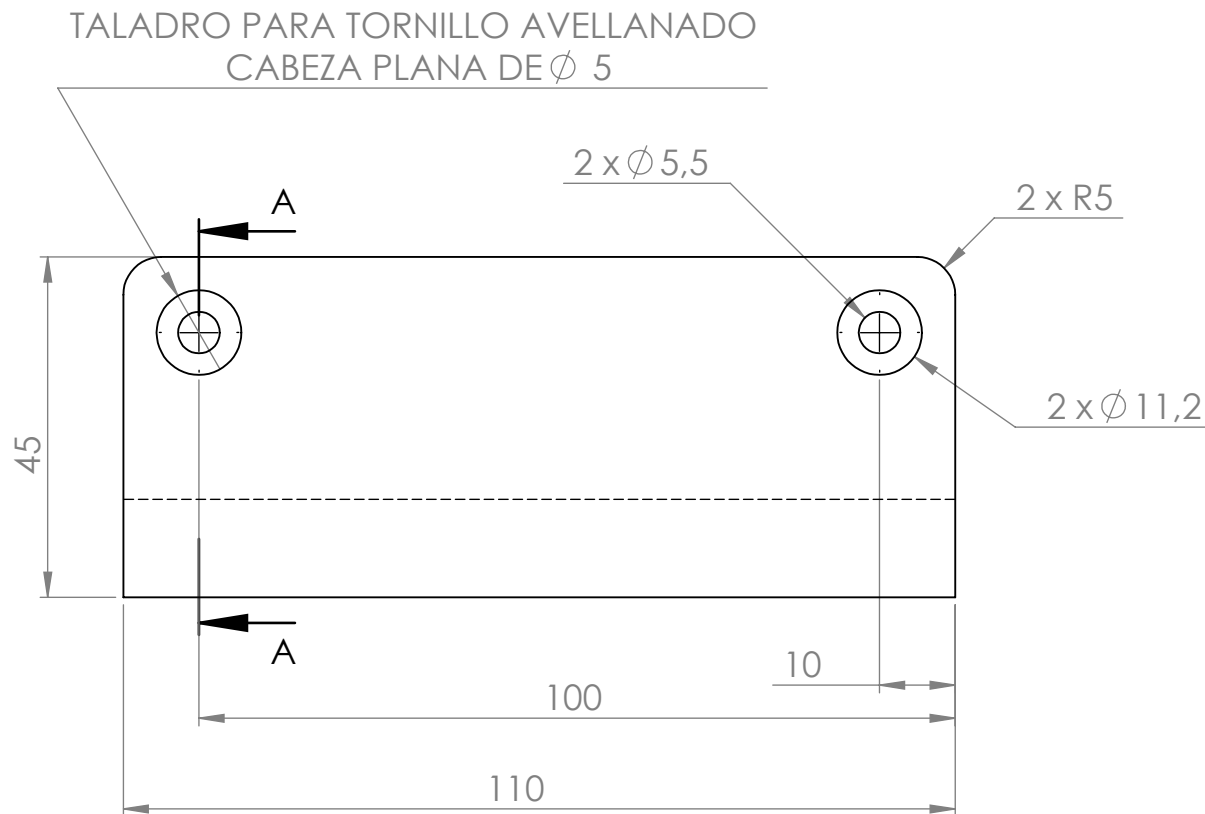
| | | | |
|-------------------------------------|-------------------------------|--------------------------------|----------------|
| Universidad Industrial de Santander | | ESCUELA DE INGENIERIA MECANICA | |
| Escala: 1:3 | | SUBSISTEMA DE REBANADO | |
| FORMATO A3 | DIBUJADO POR: Juan P. Carreño | | PIEZA Nº |
| | Nicolas Mantilla | | HOJA 3/17 |
| MEDIDAS EN: | | MATERIAL: | PL Nº 01-01-00 |

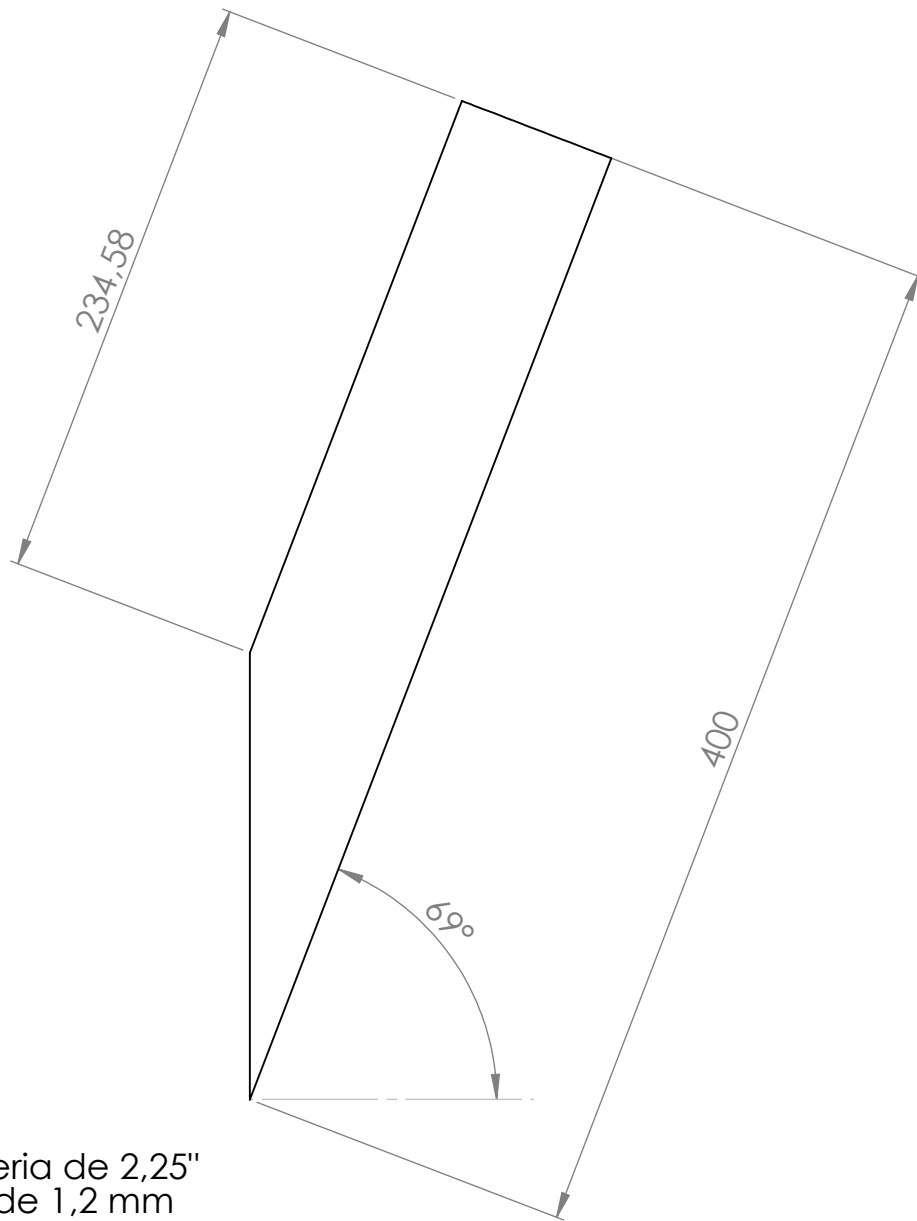


ESCALA 1:1

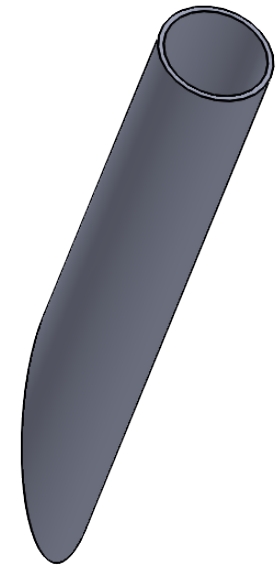


SECCIÓN A-A

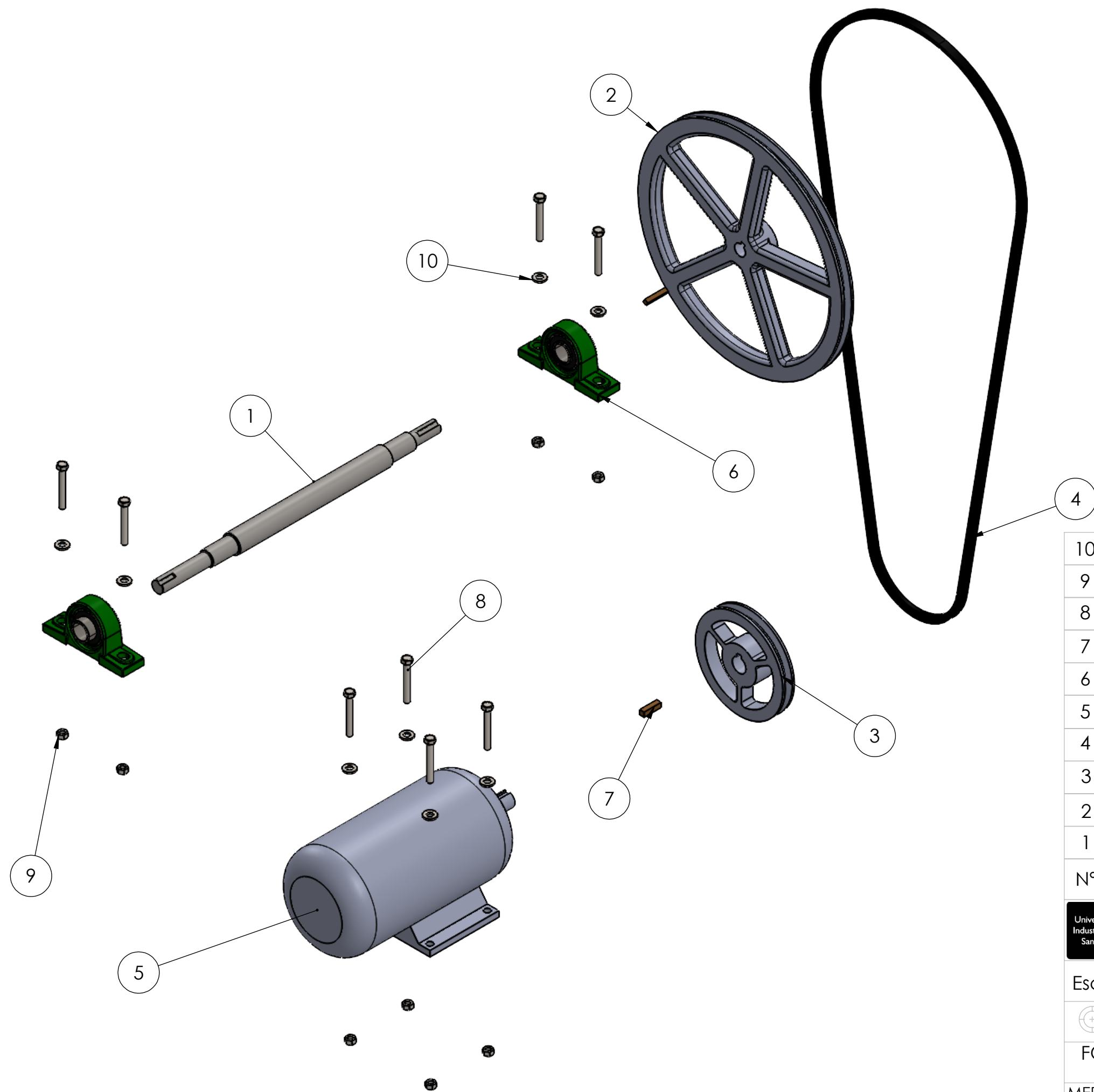




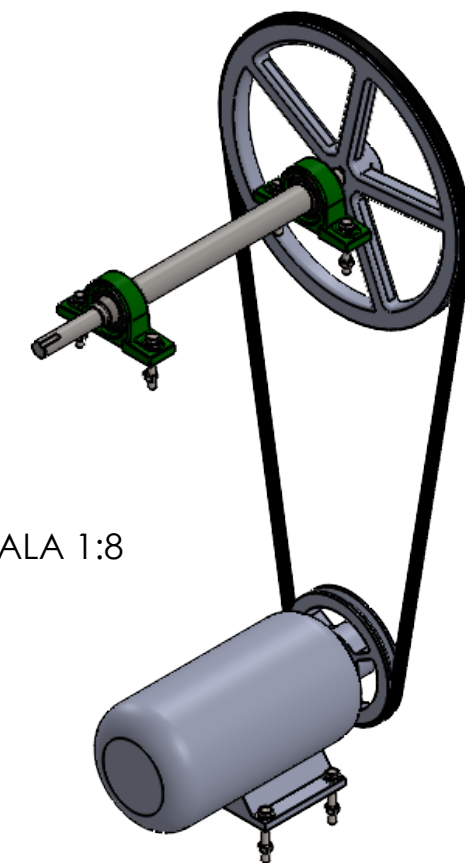
Nota: Tubería de 2,25" y espesor de 1,2 mm



ESCALA 1:4



ESCALA 1:8



| | | | |
|----|--------------------|------|------------|
| 10 | ARANDELA M8 | 8 | ACERO INOX |
| 9 | TUERCA M8 | 8 | ACERO INOX |
| 8 | TORNILLO M8 | 8 | ACERO INOX |
| 7 | CUÑA 1/4" | 2 | BRONCE |
| 6 | CHUMACERA 6205-2Z | 2 | ACERO INOX |
| 5 | MOTOR 1 hp YC90S-4 | 1 | |
| 4 | CORREA A80 | 1 | |
| 3 | POLEA 6" | 1 | ALUMINIO |
| 2 | POLEA 14" | 1 | ALUMINIO |
| 1 | EJE | 1 | AISI 304 |
| Nº | NOMBRE | CANT | MATERIAL |



ESCUELA DE INGENIERIA MECANICA

Escala: 1:5

SUBSISTEMA TRANSMISIÓN DE POTENCIA



FORMATO
A3

DIBUJADO POR:
Juan P. Carreño
Nicolas Mantilla

5/10/2025

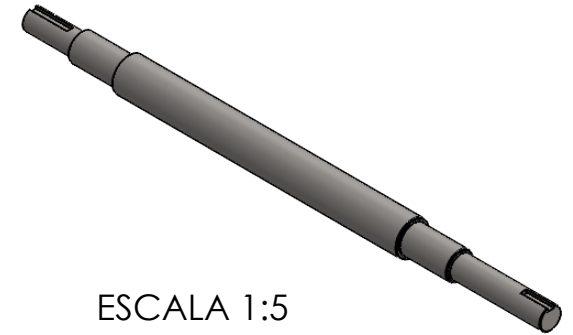
PIEZA Nº

HOJA 7/17

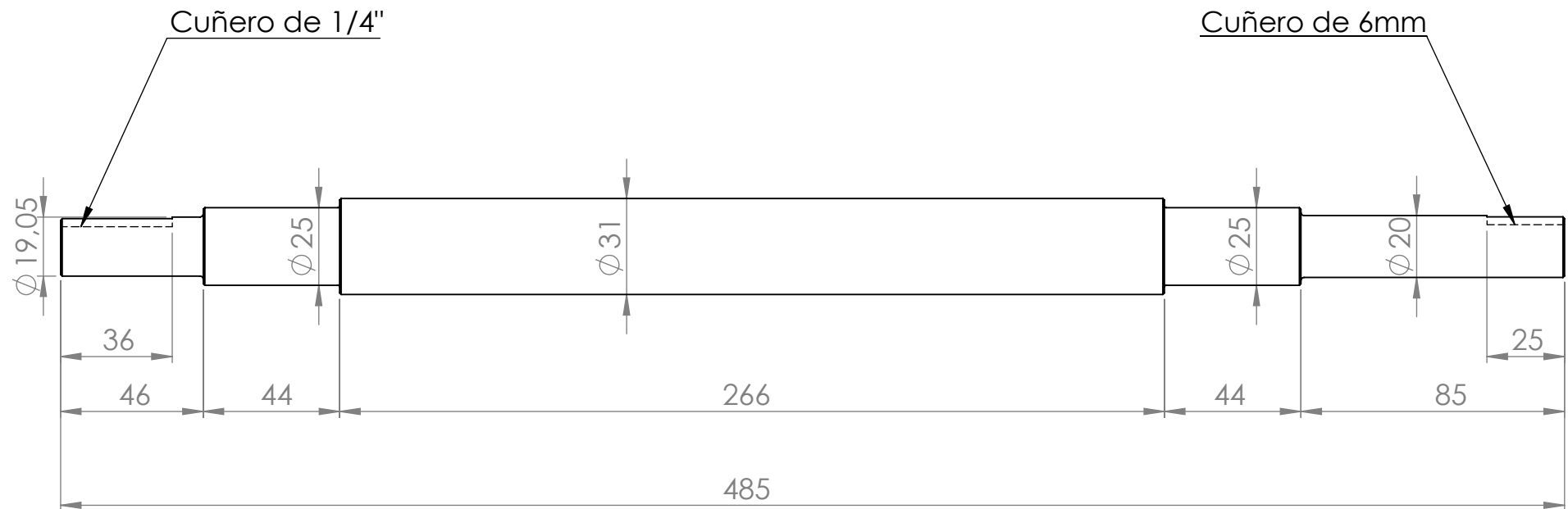
MEDIDAS EN:

MATERIAL:

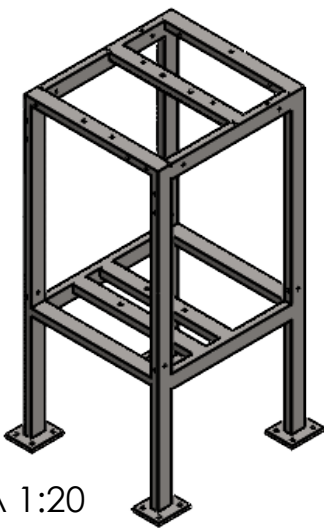
PL Nº 01-02-00



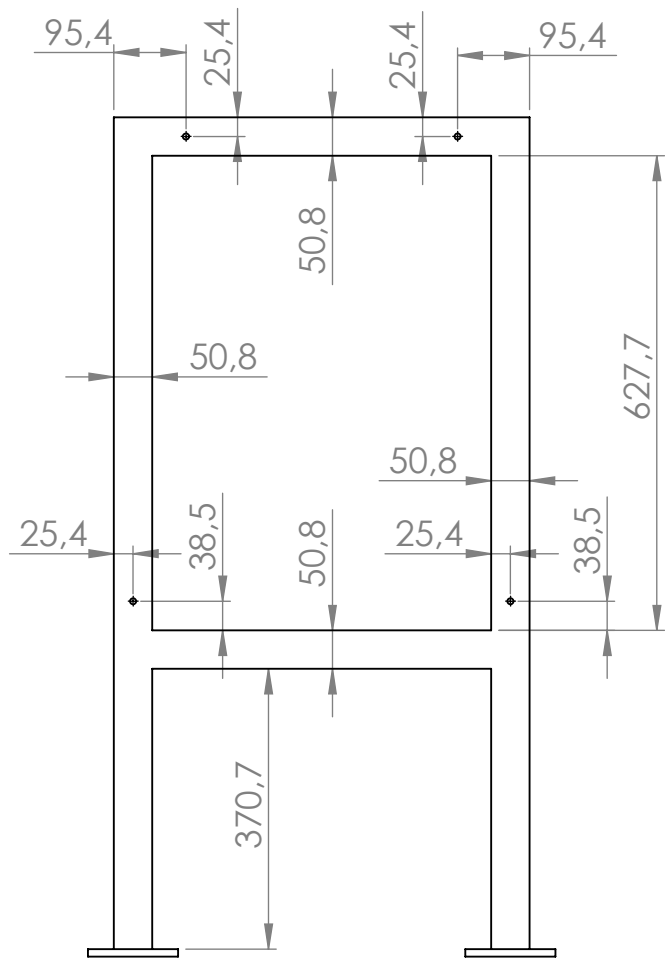
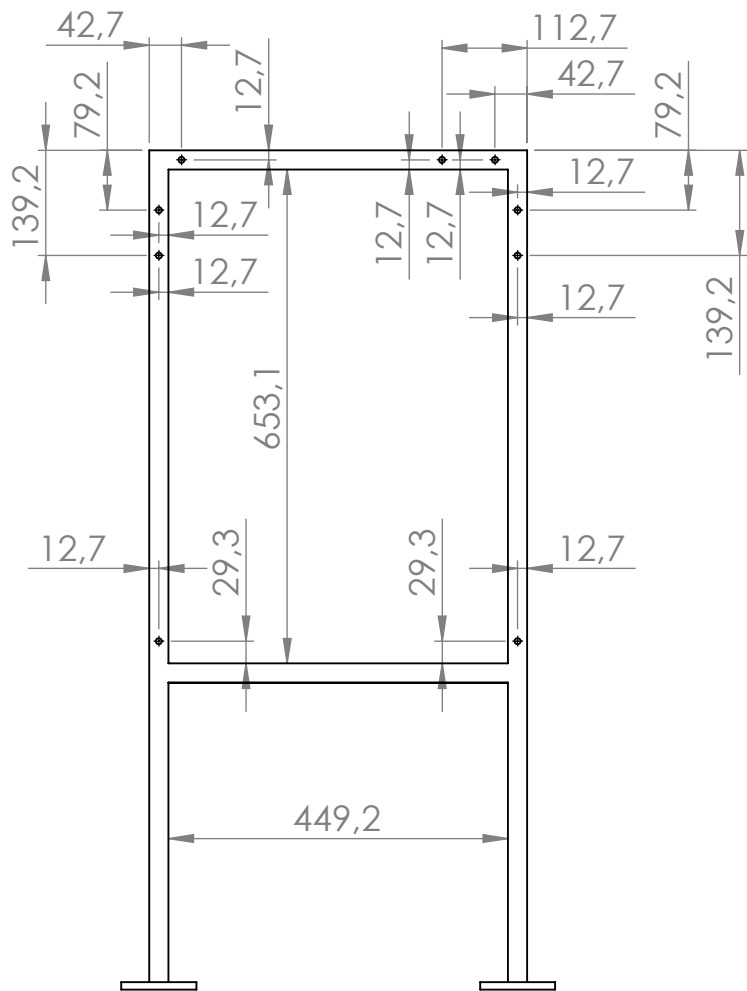
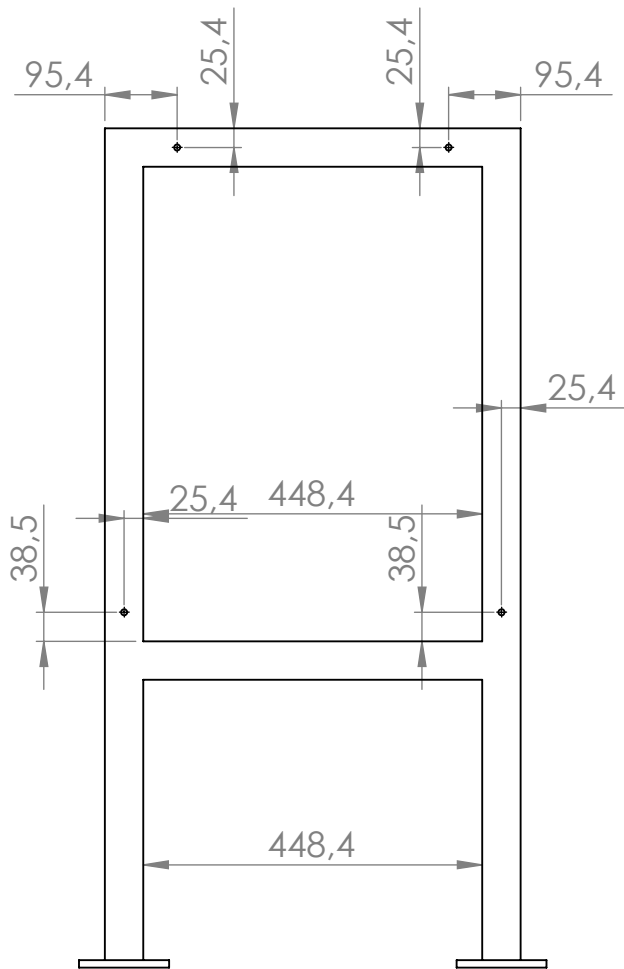
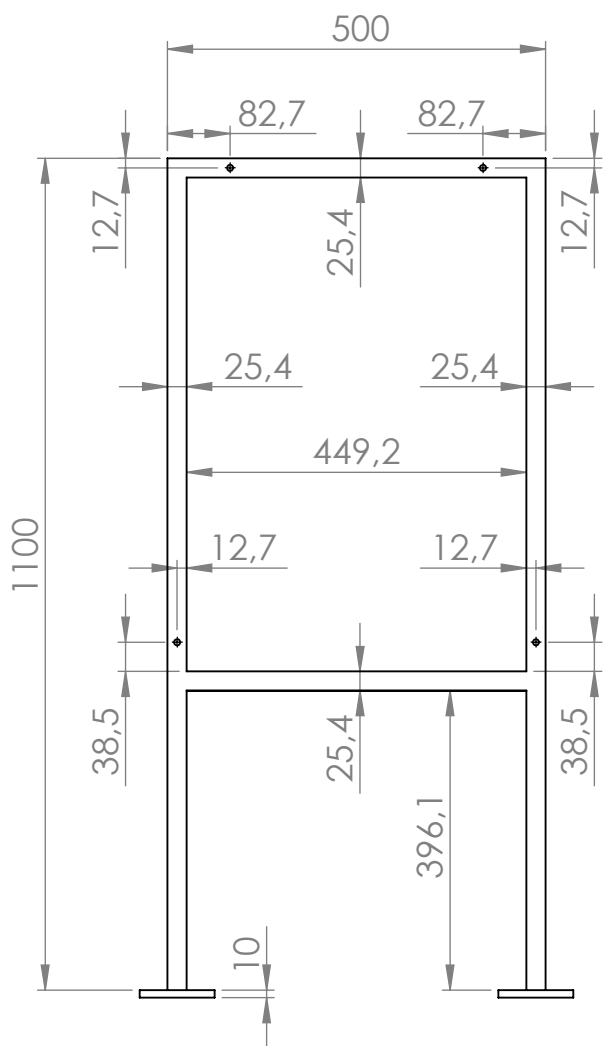
ESCALA 1:5



NOTA: Todos los agujeros corresponden a un tornillo $\varnothing 8$ mm



ESCALA 1:20



ESCUELA DE INGENIERIA MECANICA

Escala: 1:10

Bastidor - Vistas laterales



FORMATO
A3

DIBUJADO POR:
Juan P. Carreño
Nicolas Mantilla

5/10/2025

PIEZA N° 3.1

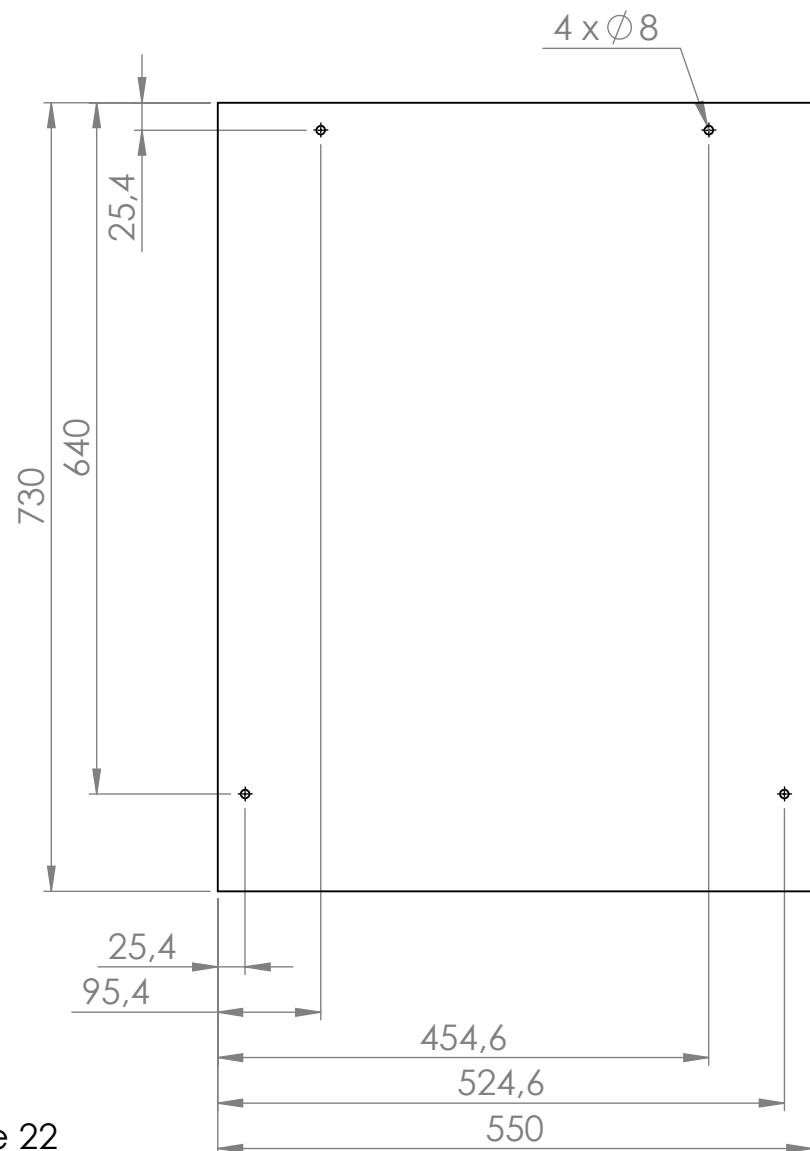
HOJA 10/17

MEDIDAS EN:
mm

MATERIAL:

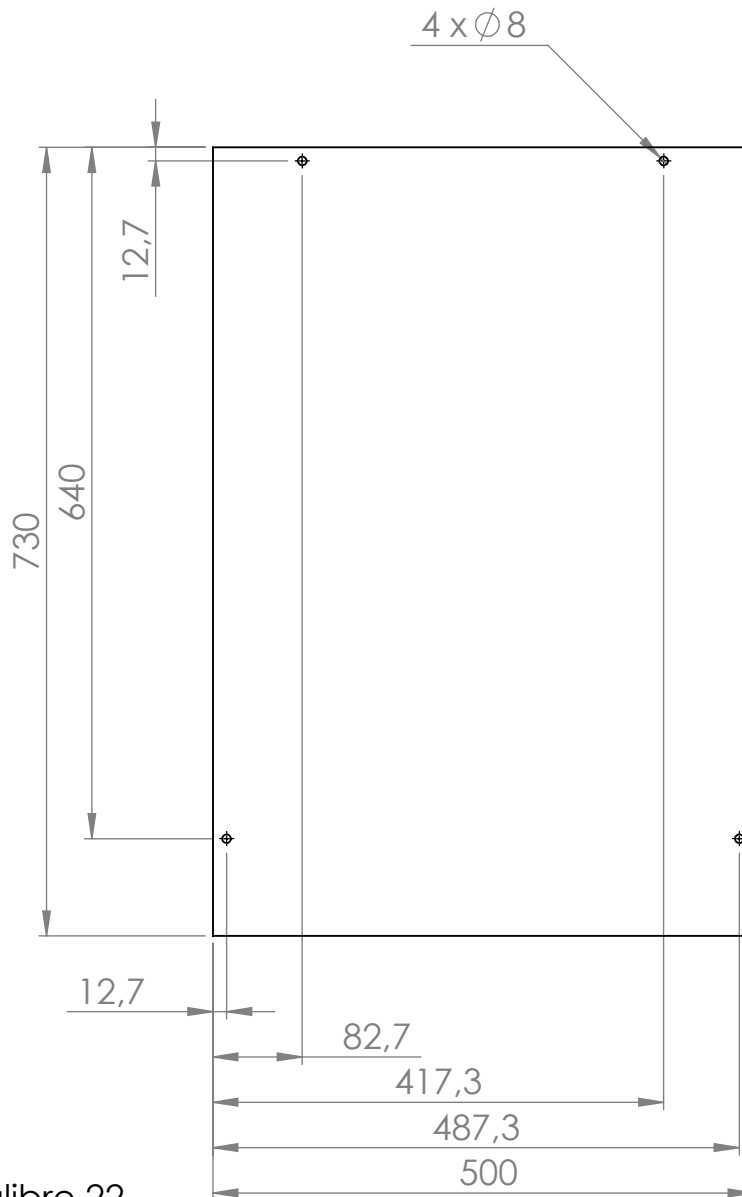
AI SI 304

PL N° 01-03-01

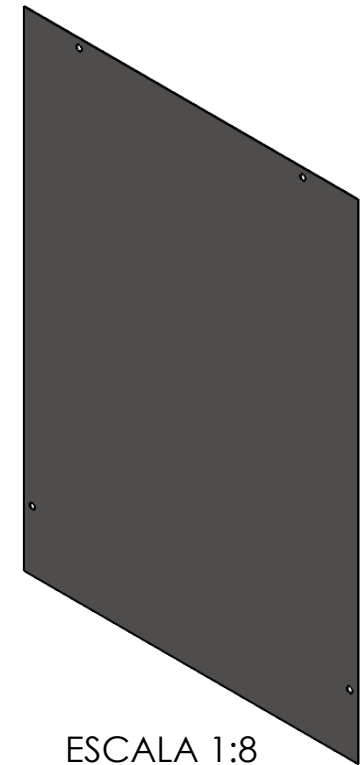


ESCALA 1:8

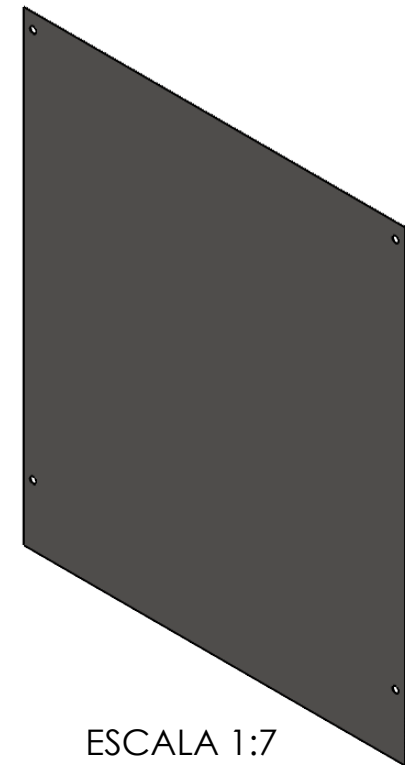
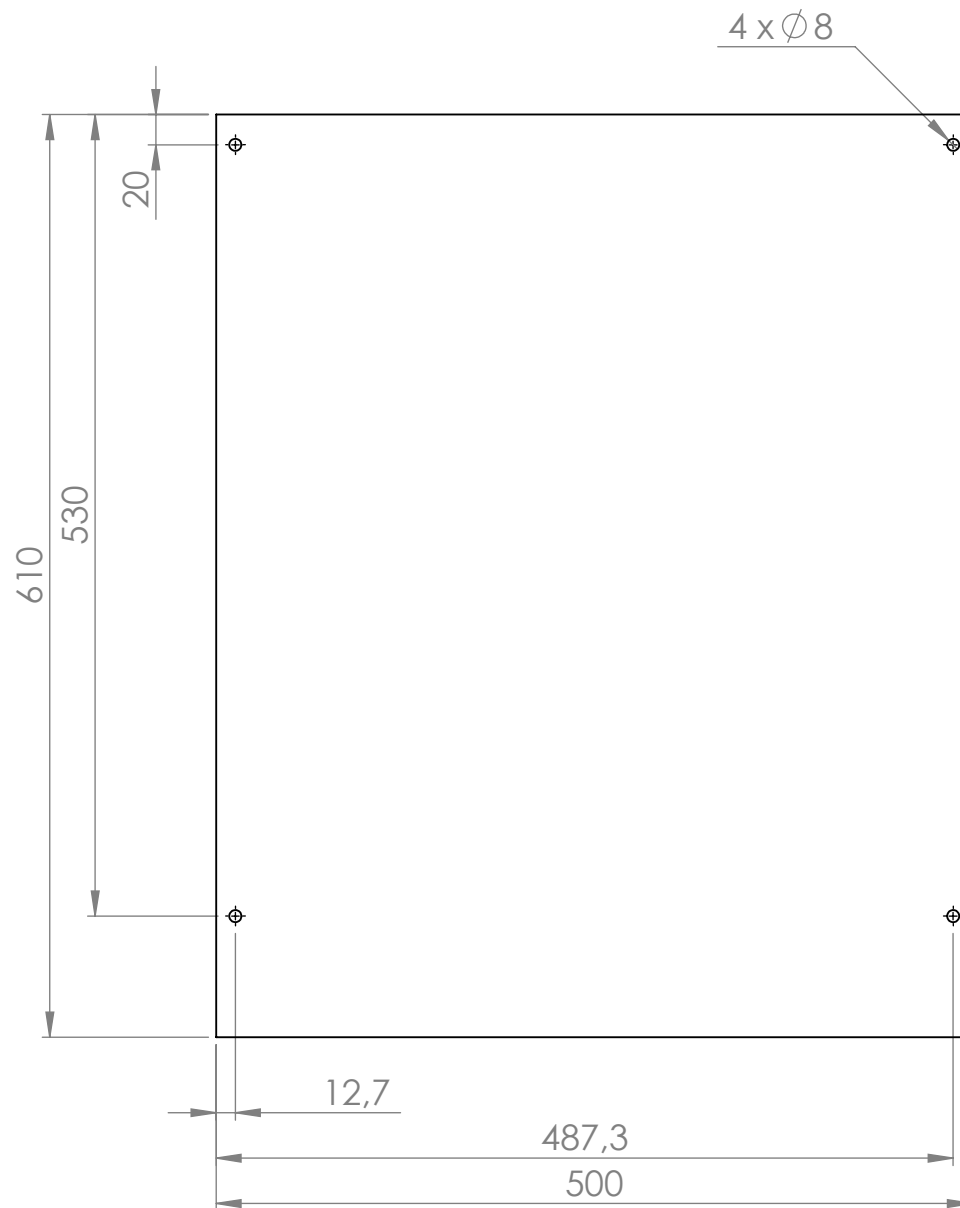
Nota: Lamina Calibre 22



Nota: Lamina Calibre 22

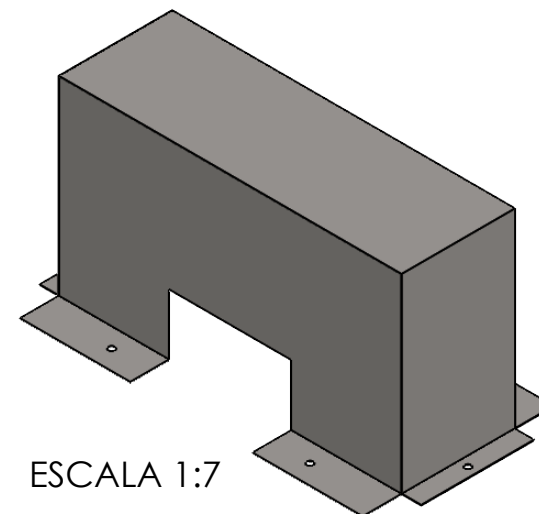
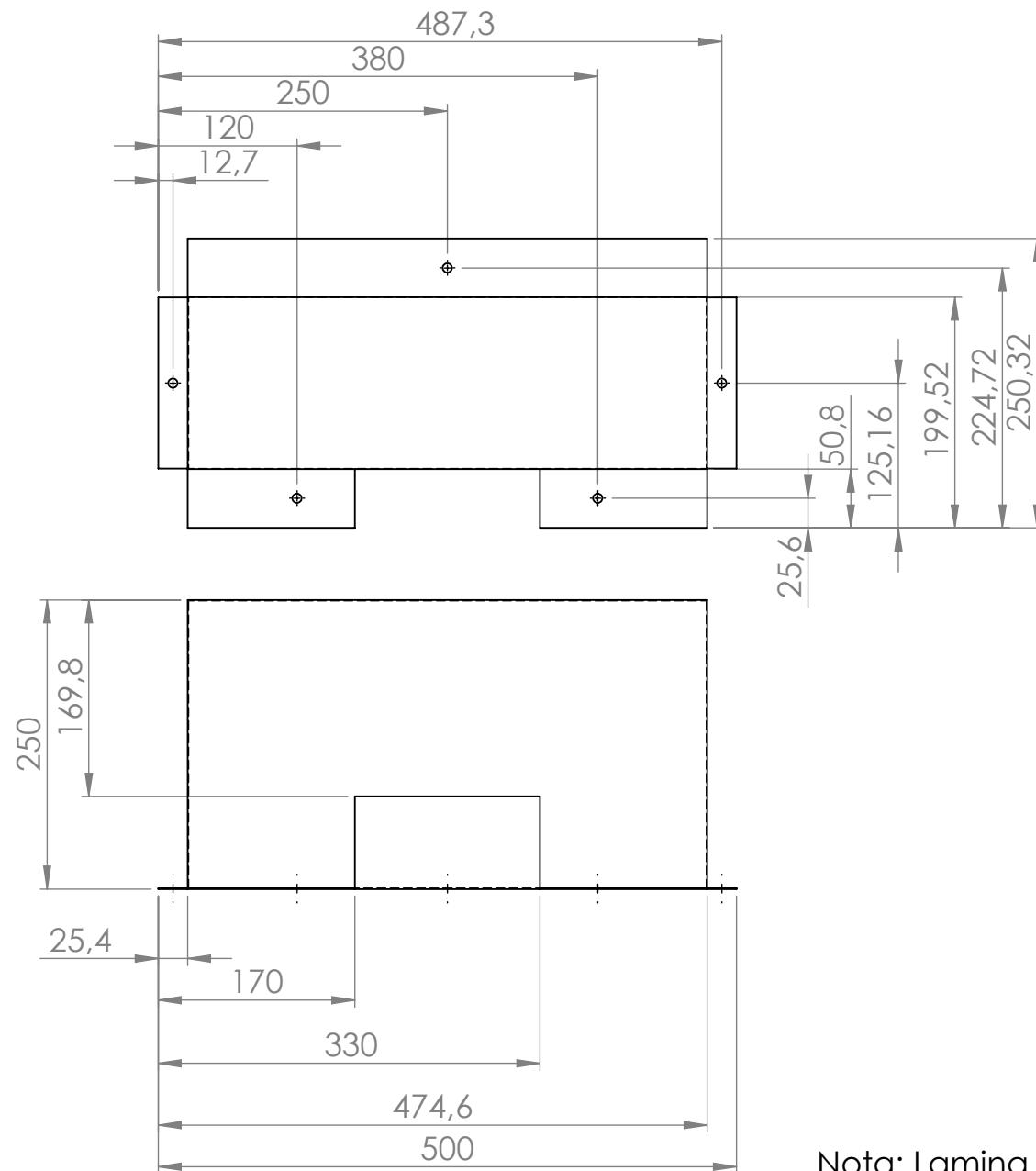


ESCALA 1:8



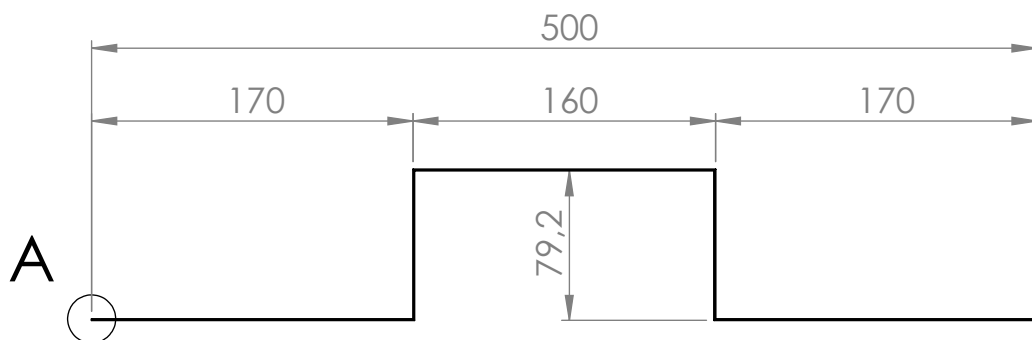
ESCALA 1:7

Nota: Lamina Calibre 22

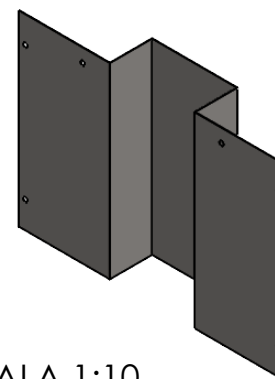


ESCALA 1:7

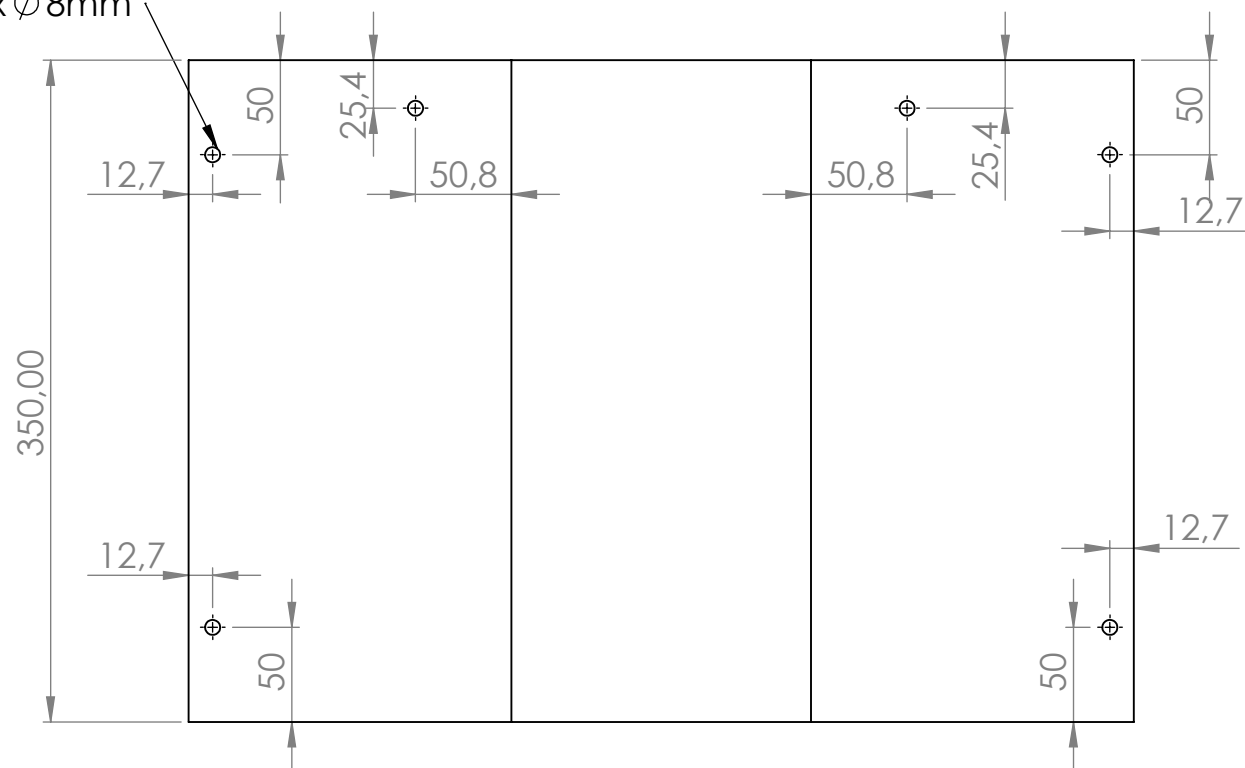
Nota: Lamina Calibre 22



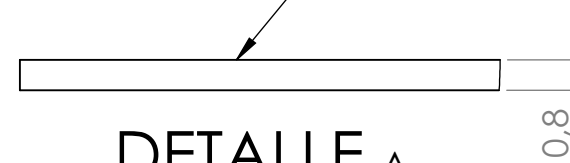
ESCALA 1:10



6 x $\varnothing 8\text{mm}$

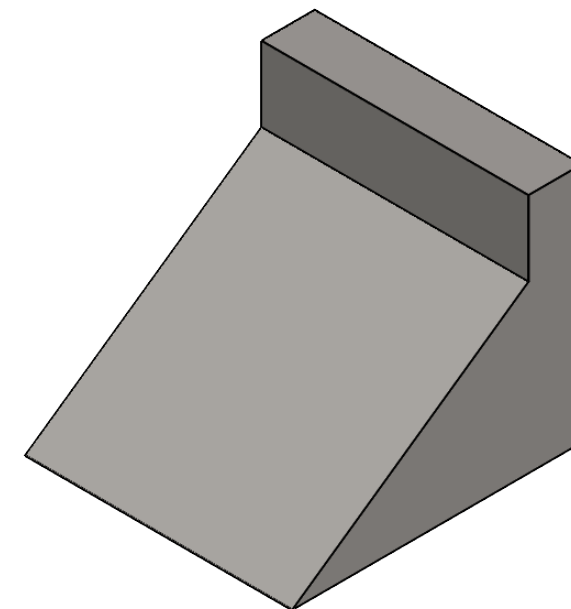
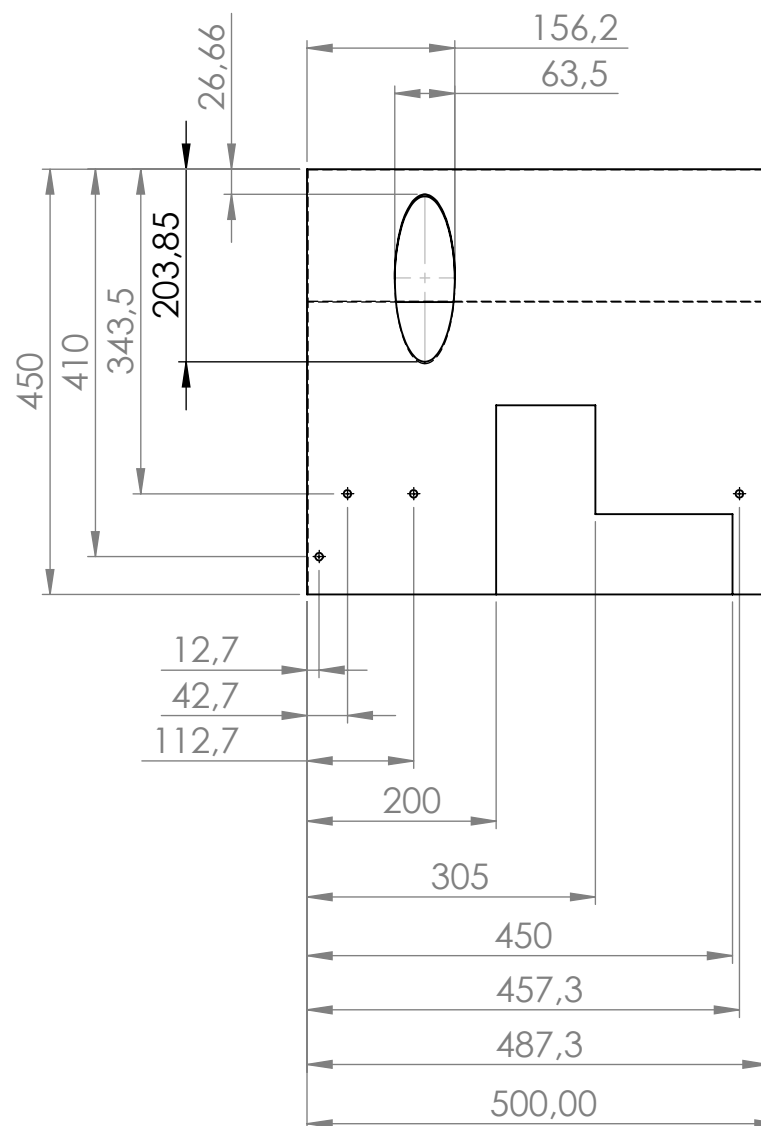
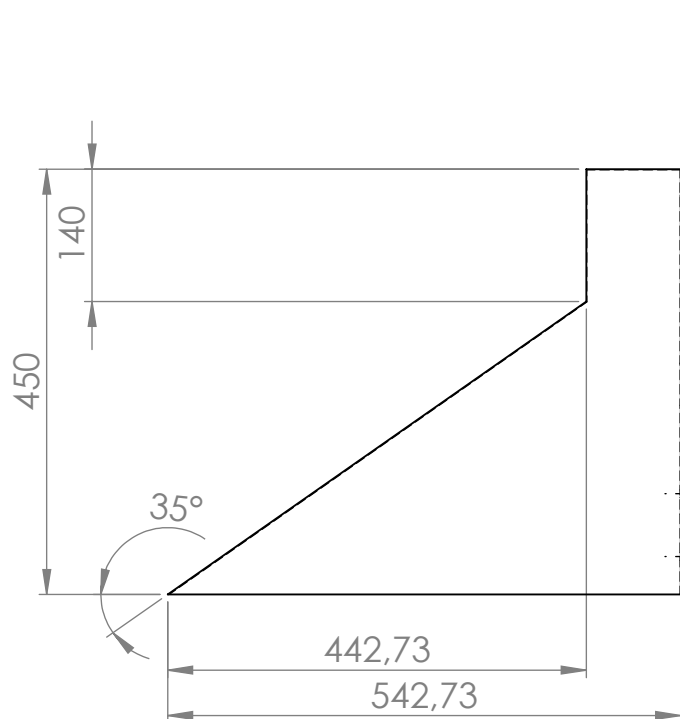


Lamina calibre 22



DETALLE A

ESCALA 5 : 1



ESCALA 1:10

Nota: Lamina Calibre 22